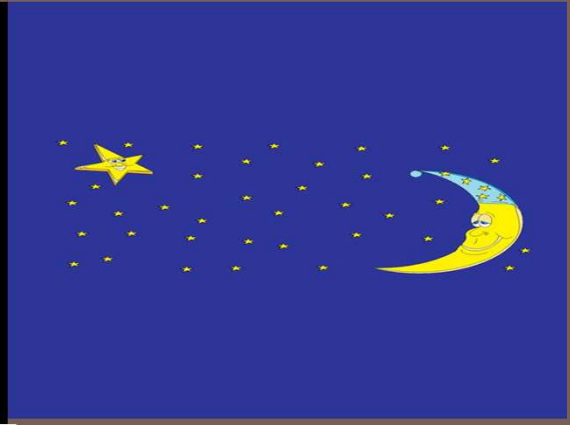


# THE MOON

## BY WILLIAM NIU





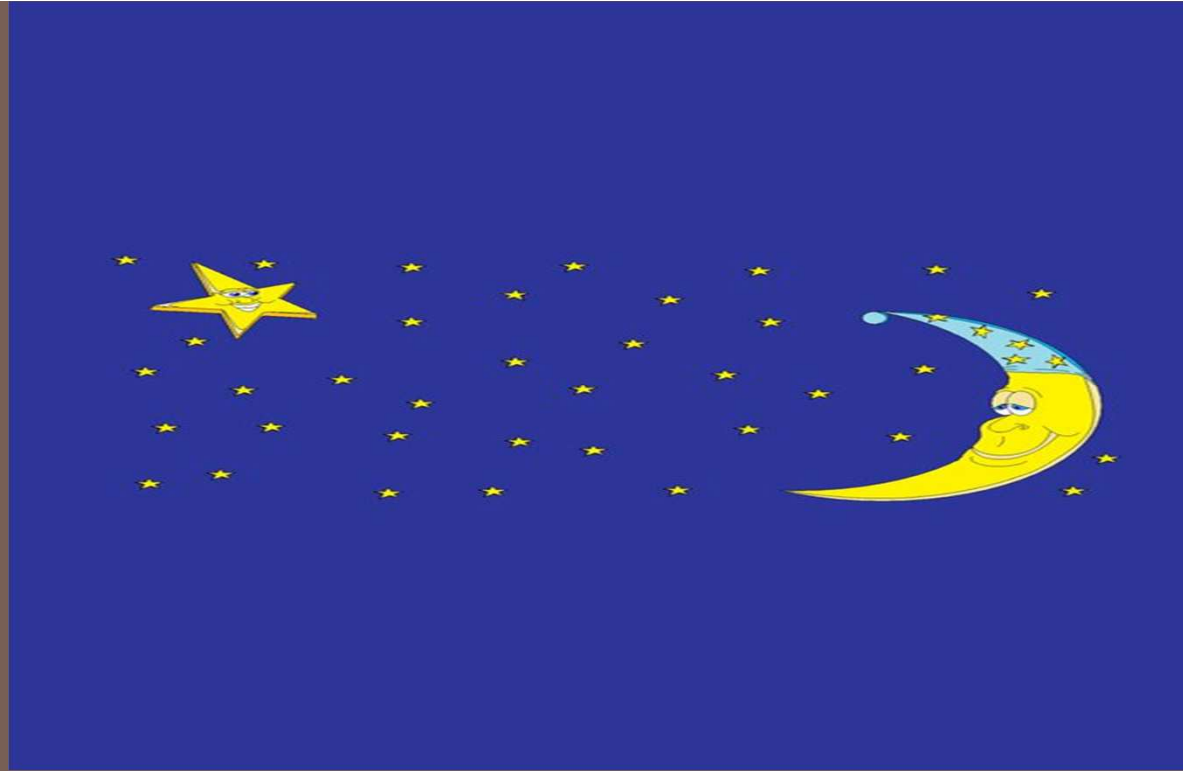
THE MOON IN THE SKY IS AS BIG AS A GIANT EGG LAID IN THE SKY. IT IS ROUND AND LOOKS LIKE A GIANT PLATE HANGING FROM THE SKY. IT IS LIKE A GIANT DISK PLUGGED INTO THE MOUNTAIN. IT IS SO LUMINOUS OF THE REFLECTED SUN LIGHT AND LIGHTS UP THE DARK AT NIGHT.





SOMETIMES, THE MOON IS NOT ALWAYS FULL. IT LOOKS LIKE A GIANT BANANA FLOATING IN THE DARKNESS OF THE SKY. IT LOOKS LIKE IT WERE A ROWING IN THE SKY WHICH LOOKED LIKE A GIGANTIC POND. WITH THE MOON AND THE CLOUD THEY COMBINE TOGETHER AND LOOK LIKE A LITTLE GIRL RIDING A BIKE FAST AND FLYING IN THE DARKNESS OF THE SKY.





THE MOON AND THE STARS IN THE SKY IS SUCH AN AMAZING, SPLENDID SITE WITH THE CLEAR, BLUE SKY. IT LOOKS LIKE THE STARS WERE TINY STARFISH SWIMMING IN THE SKY WHICH LOOKED LIKE THE OCEAN. THE MOON LOOKS LIKE THE MOTHER TO ALL THE STARS. THE MOON IS TIRED AND READY TO CLOSE HER EYES AND READY TO SLEEP. THE STARS KEEP BOTHERING HER SO HE CAN'T GO TO SLEEP. WHAT A NOISY SITE!



THE MOON IS HIGH UP THE SKY. SUDDENLY, THERE IS A SUDDEN FLASH WHICH LOOKS LIKE A METEOR BUT IT IS A PLANE FLYING BELOW THE THICK AND GRAY CLOUD. IT GOES THROUGH THE CLOUDS AND THE PLANE MAKES A HOLE THROUGH THE CLOUD. IT BRINGS CLOUD ON THE OUTSIDE BODY OF THE PLANE AND MAKES A LINE AFTER IT'S GONE.

